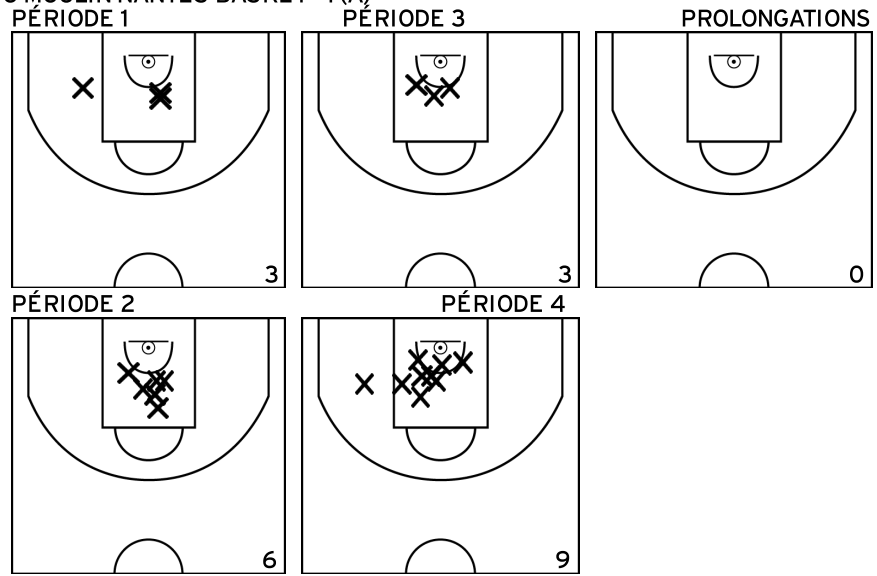
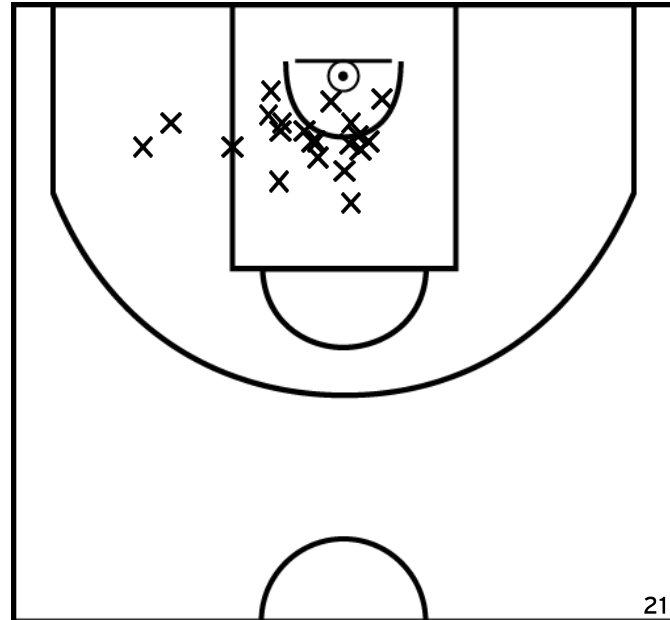
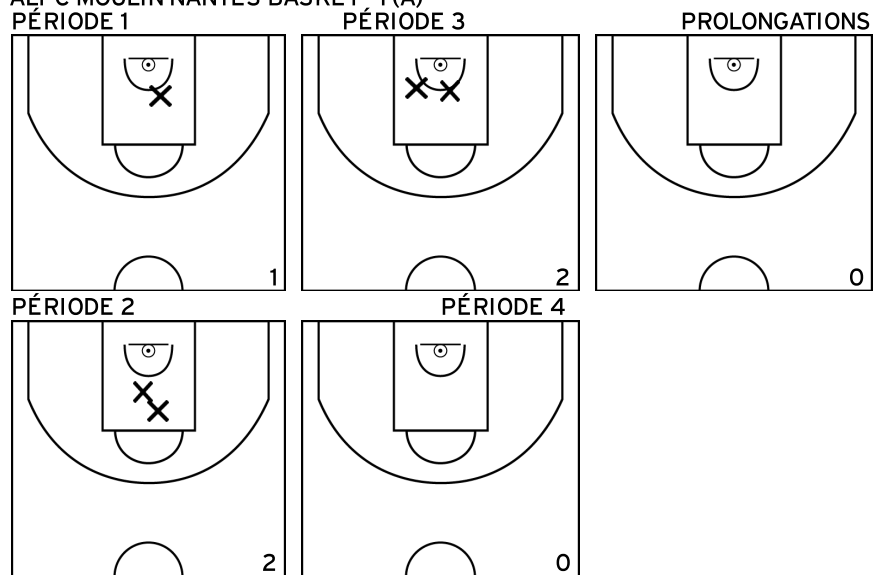
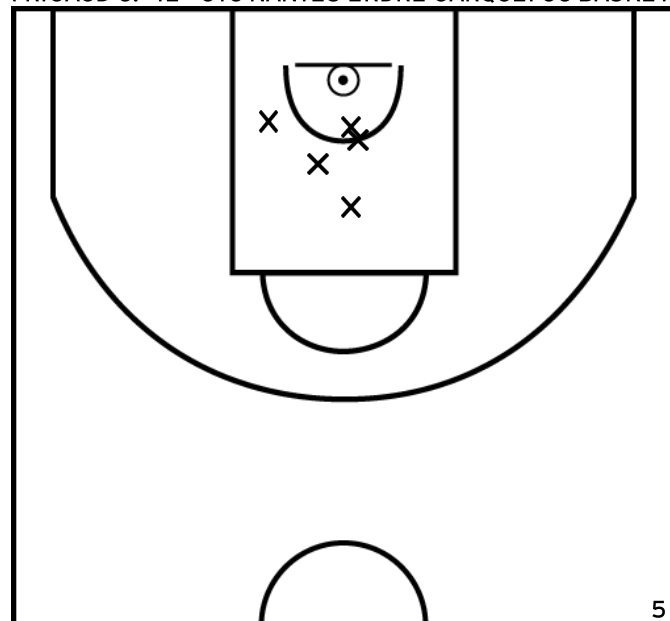


Rencontre: 6051 Date: 08/10/22 Heure: 16:00
Arbitre: MOREAU L HIVELIN H

ÉQUIPE IE - CTC NANTES ERDRE CARQUEFOU BASKET - ALPC MOULIN NANTES BASKET - 1 (A)

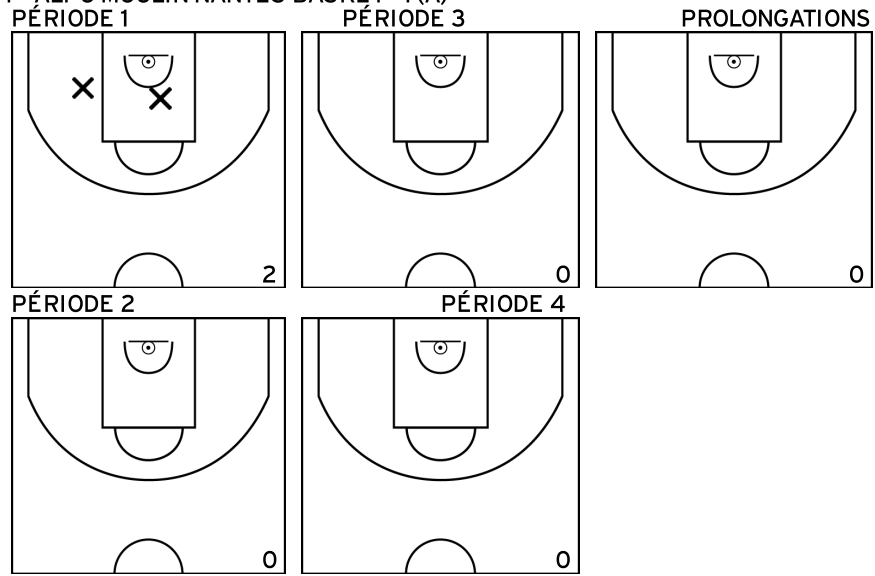
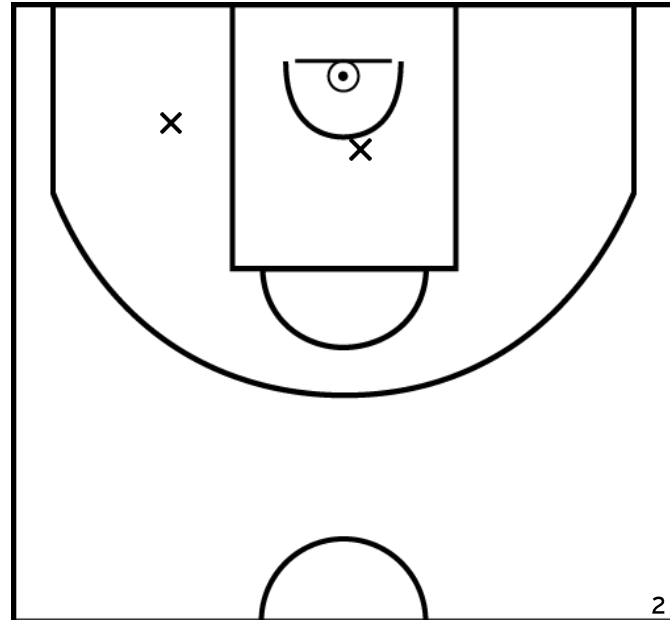


FRICAUD C. - IE - CTC NANTES ERDRE CARQUEFOU BASKET - ALPC MOULIN NANTES BASKET - 1 (A)

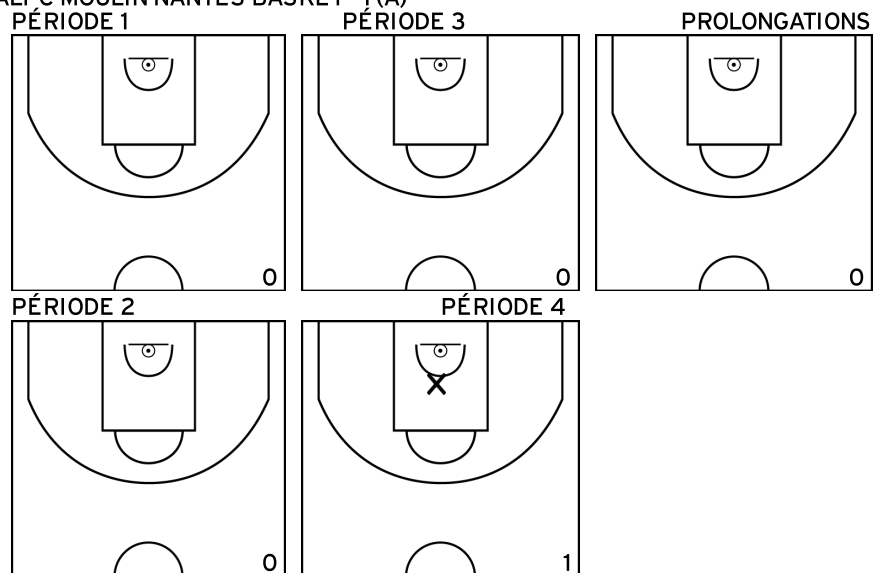
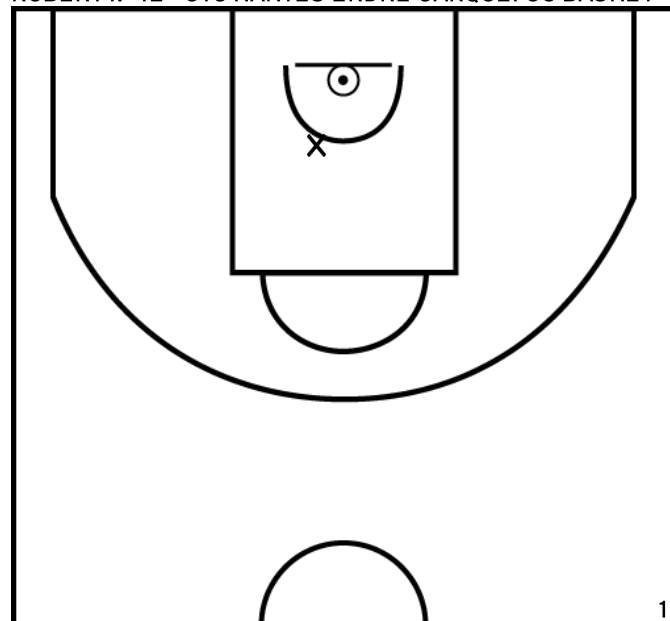


Rencontre: 6051 Date: 08/10/22 Heure: 16:00
Arbitre: MOREAU L HIVELIN H

FAZILLEAU A. - IE - CTC NANTES ERDRE CARQUEFOU BASKET - ALPC MOULIN NANTES BASKET - 1 (A)

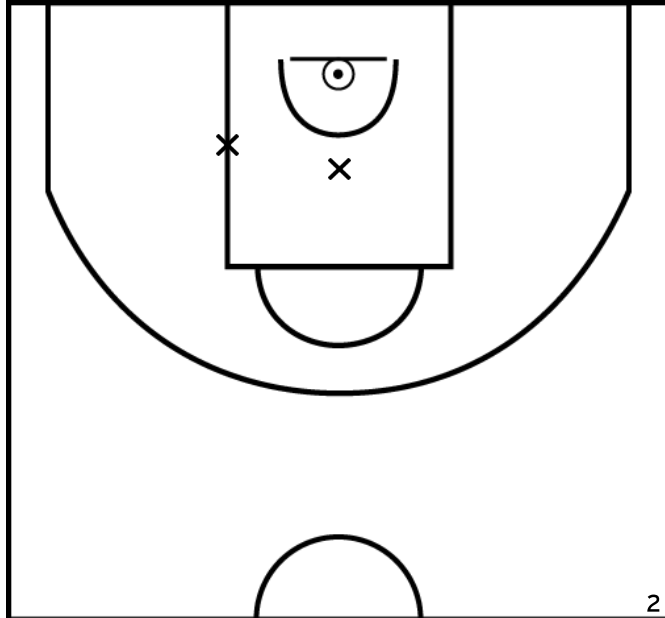


ROBERT I. - IE - CTC NANTES ERDRE CARQUEFOU BASKET - ALPC MOULIN NANTES BASKET - 1 (A)

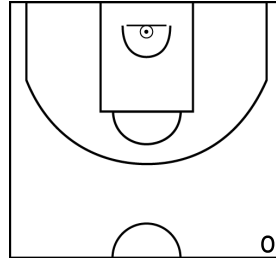


Rencontre: 6051 Date: 08/10/22 Heure: 16:00
Arbitre: MOREAU L HIVELIN H

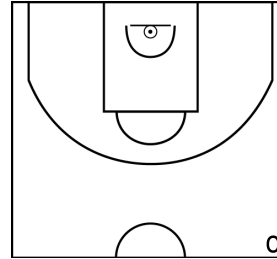
BODIGUEL A. - IE - CTC NANTES ERDRE CARQUEFOU BASKET - ALPC MOULIN NANTES BASKET - 1 (A)



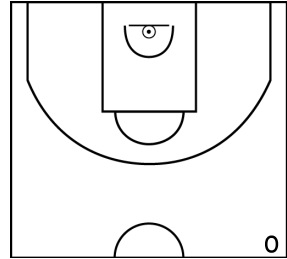
PÉRIODE 1



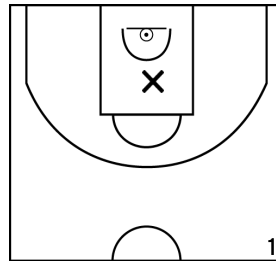
PÉRIODE 3



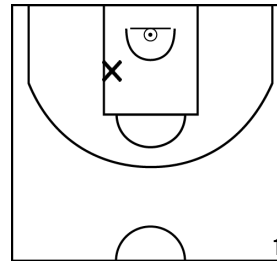
PROLONGATIONS



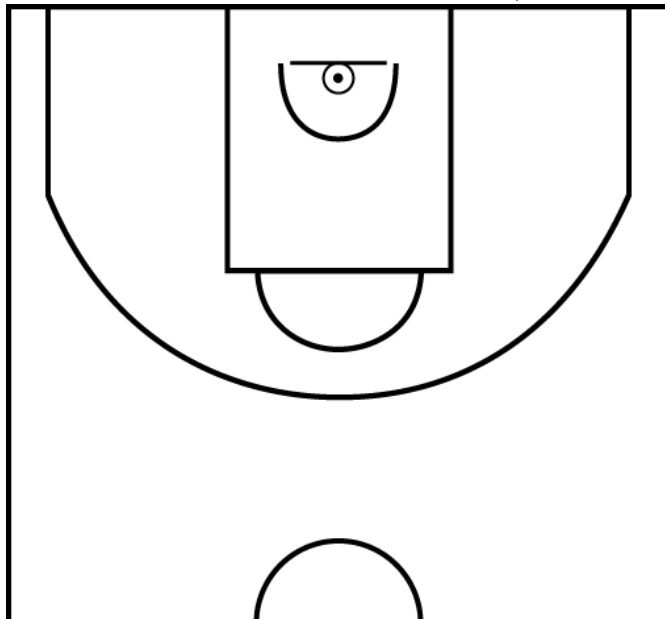
PÉRIODE 2



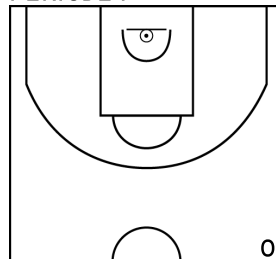
PÉRIODE 4



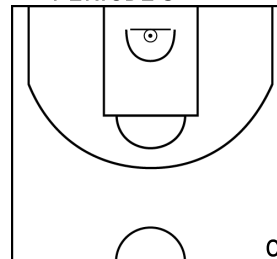
GUERMEUR R. - IE - CTC NANTES ERDRE CARQUEFOU BASKET - ALPC MOULIN NANTES BASKET - 1 (A)



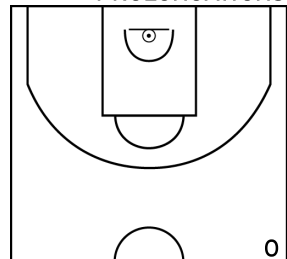
PÉRIODE 1



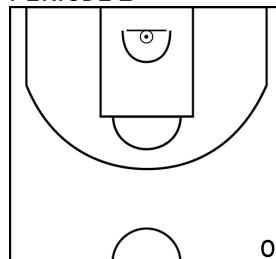
PÉRIODE 3



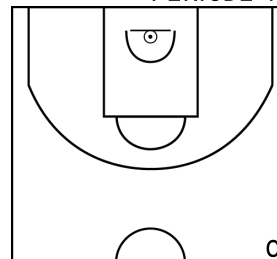
PROLONGATIONS



PÉRIODE 2

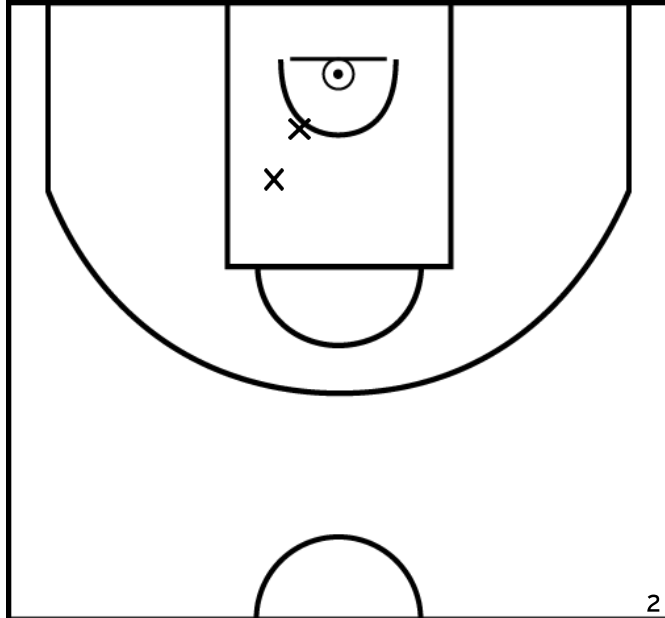


PÉRIODE 4

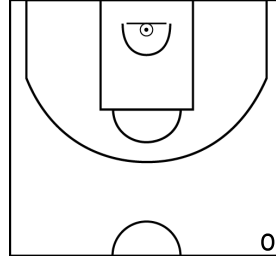


Rencontre: 6051 Date: 08/10/22 Heure: 16:00
Arbitre: MOREAU L HIVELIN H

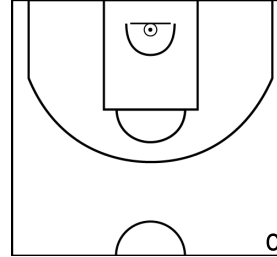
ERIAUD E. - IE - CTC NANTES ERDRE CARQUEFOU BASKET - ALPC MOULIN NANTES BASKET - 1 (A)



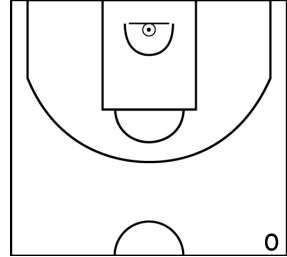
PÉRIODE 1



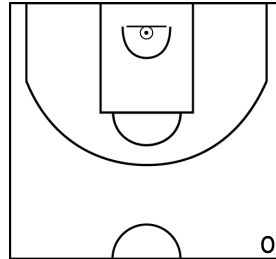
PÉRIODE 3



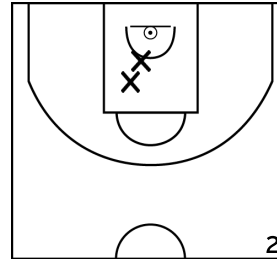
PROLONGATIONS



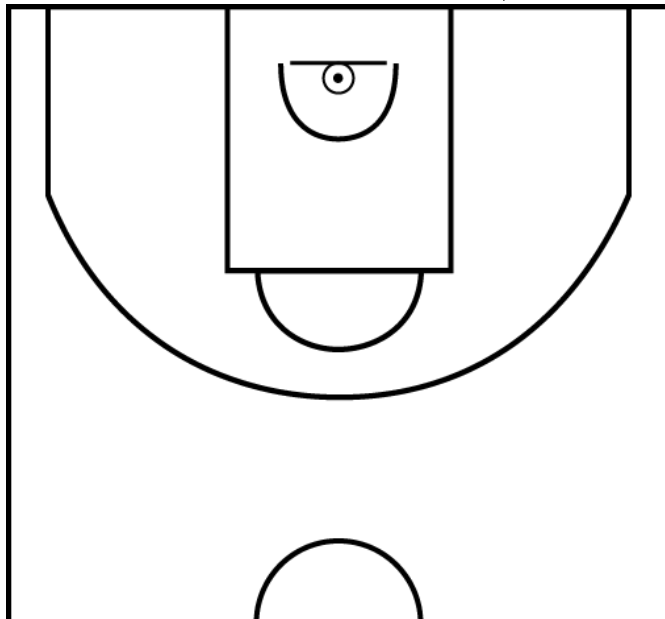
PÉRIODE 2



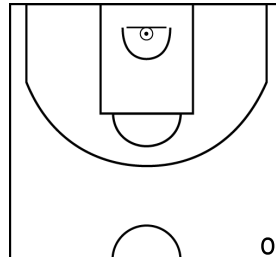
PÉRIODE 4



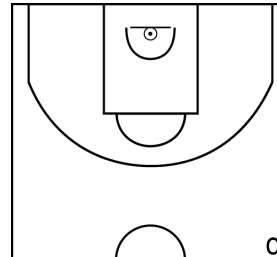
FERREIRA N. - IE - CTC NANTES ERDRE CARQUEFOU BASKET - ALPC MOULIN NANTES BASKET - 1 (A)



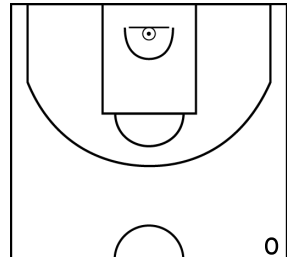
PÉRIODE 1



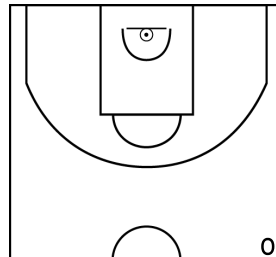
PÉRIODE 3



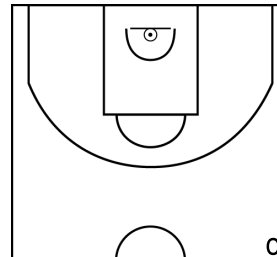
PROLONGATIONS



PÉRIODE 2

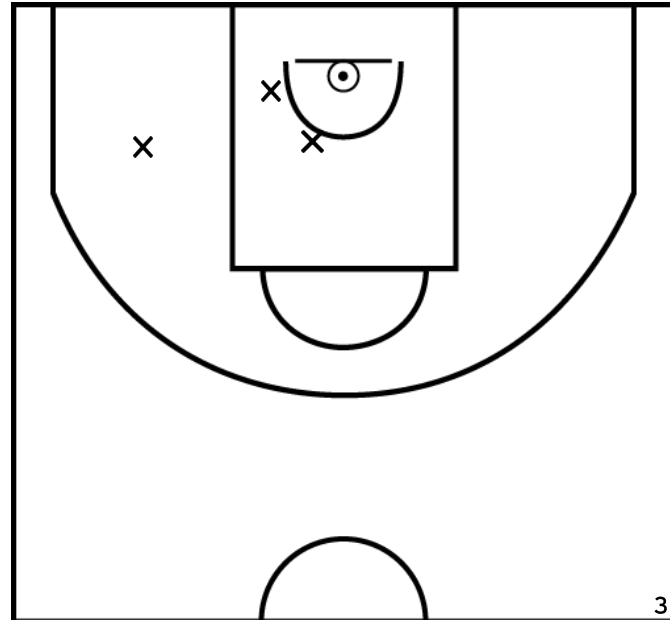


PÉRIODE 4

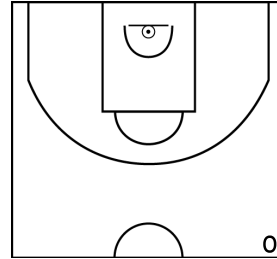


Rencontre: 6051 Date: 08/10/22 Heure: 16:00
Arbitre: MOREAU L HIVELIN H

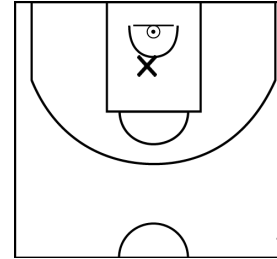
BOUHAROU K. - IE - CTC NANTES ERDRE CARQUEFOU BASKET - ALPC MOULIN NANTES BASKET - 1 (A)



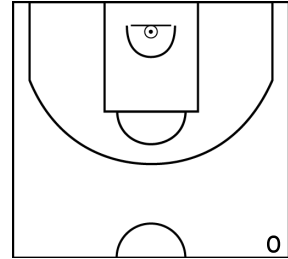
PÉRIODE 1



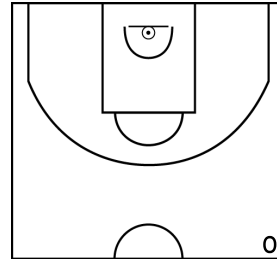
PÉRIODE 3



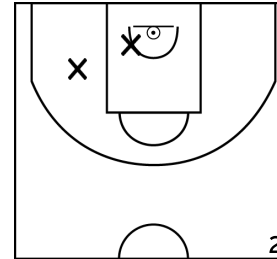
PROLONGATIONS



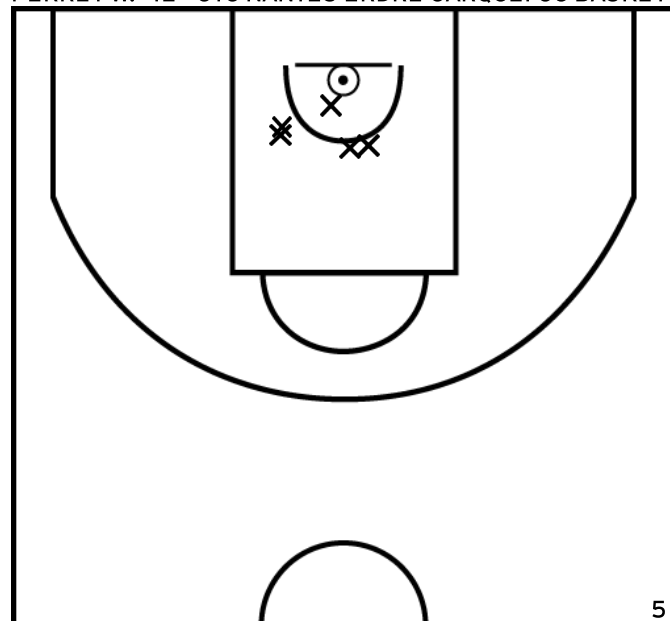
PÉRIODE 2



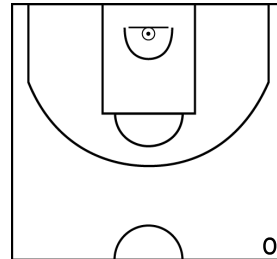
PÉRIODE 4



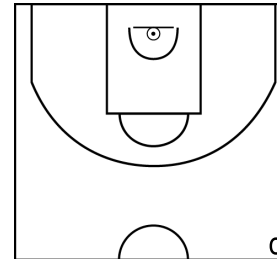
PERRET W. - IE - CTC NANTES ERDRE CARQUEFOU BASKET - ALPC MOULIN NANTES BASKET - 1 (A)



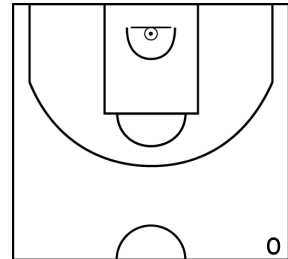
PÉRIODE 1



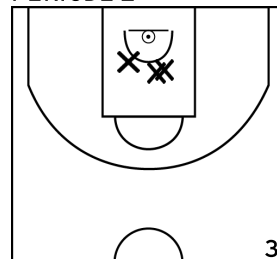
PÉRIODE 3



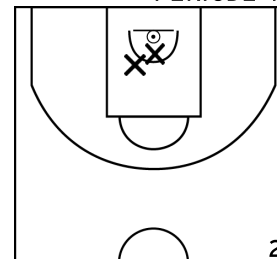
PROLONGATIONS



PÉRIODE 2

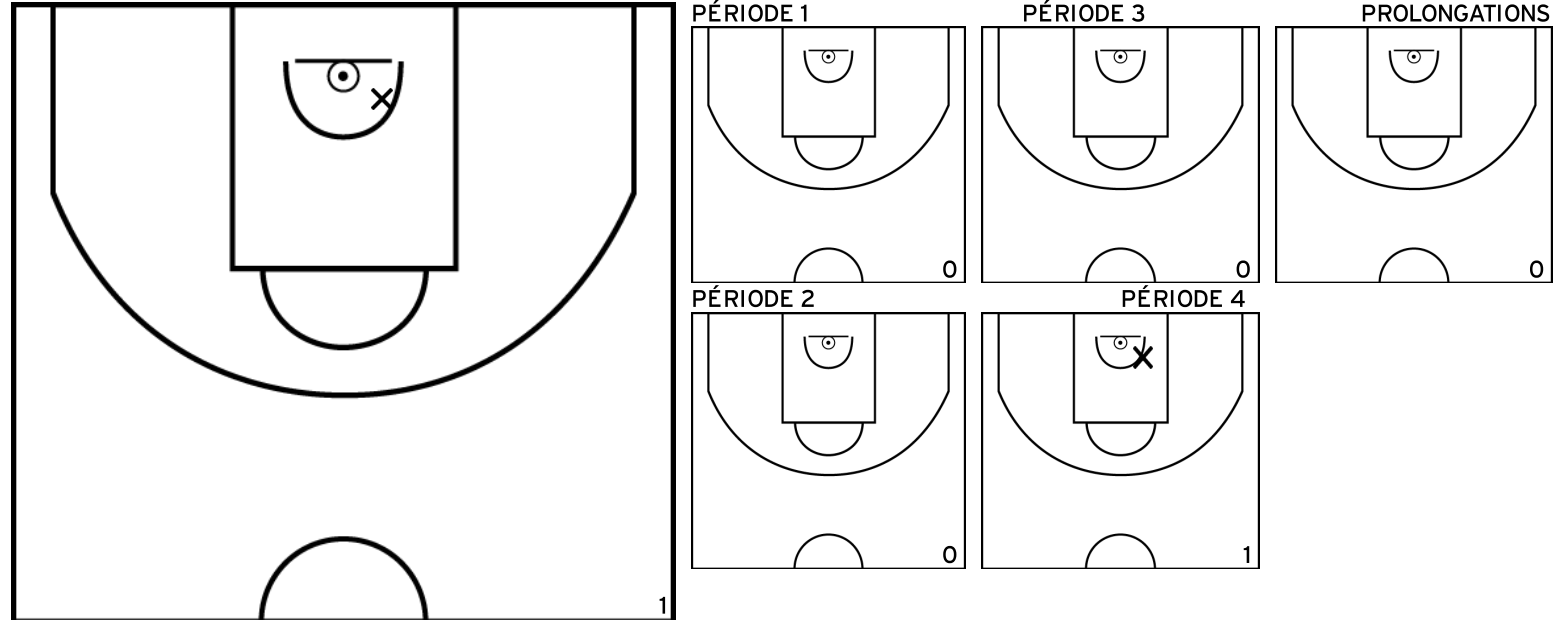


PÉRIODE 4

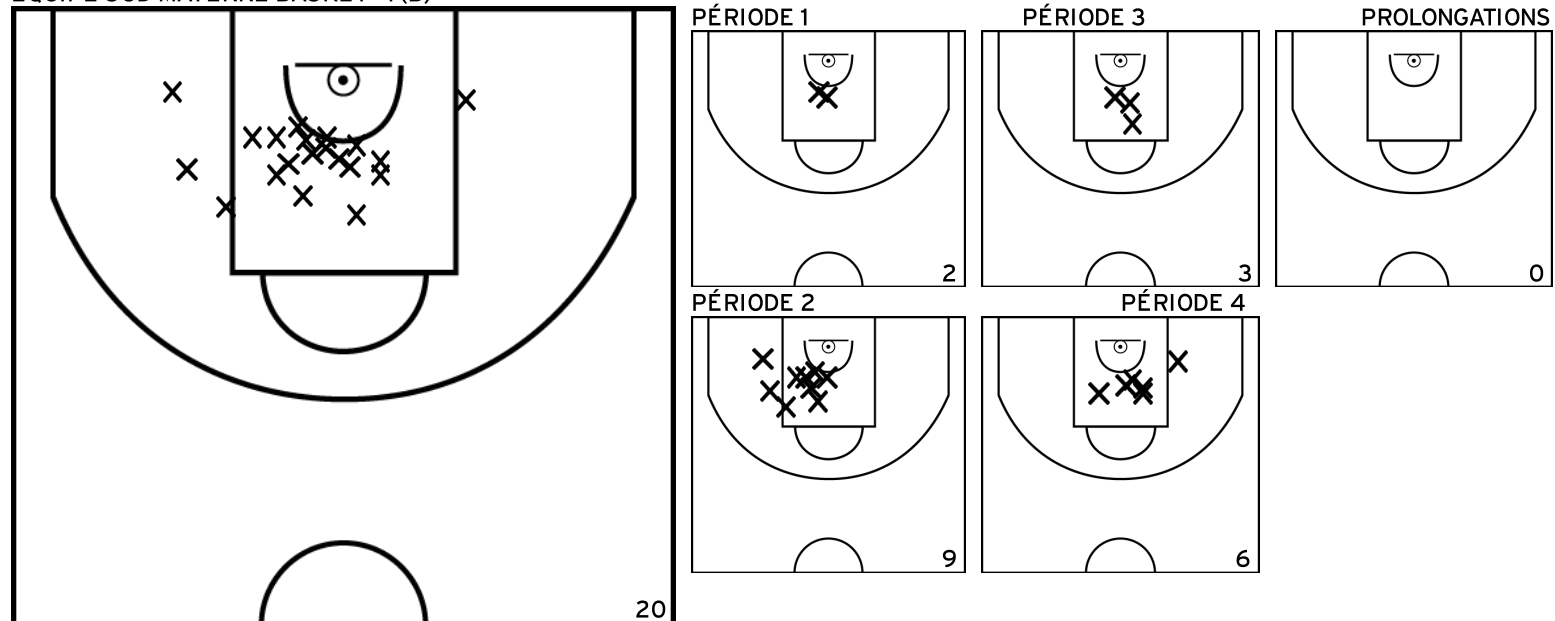


Rencontre: 6051 Date: 08/10/22 Heure: 16:00
Arbitre: MOREAU L HIVELIN H

MEYER M. - IE - CTC NANTES ERDRE CARQUEFOU BASKET - ALPC MOULIN NANTES BASKET -1 (A)

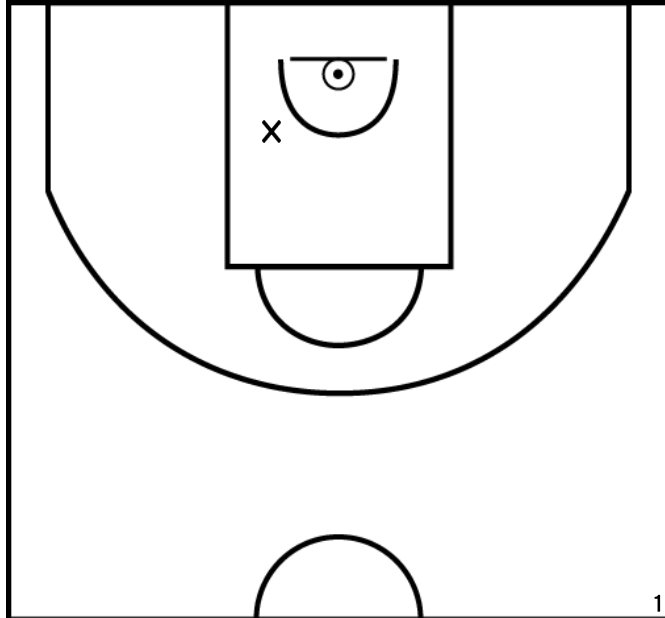


ÉQUIPE SUD MAYENNE BASKET -1 (B)

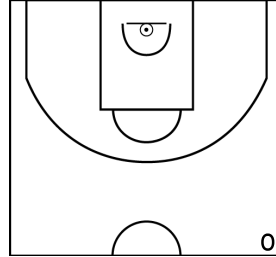


Rencontre: 6051 Date: 08/10/22 Heure: 16:00
Arbitre: MOREAU L HIVELIN H

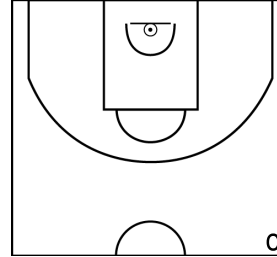
OURY E. - SUD MAYENNE BASKET - 1 (B)



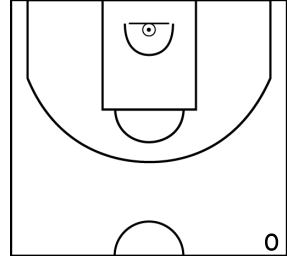
PÉRIODE 1



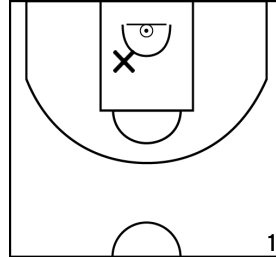
PÉRIODE 3



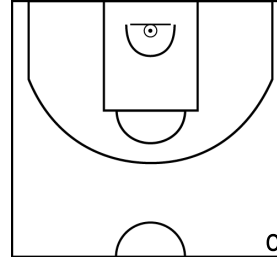
PROLONGATIONS



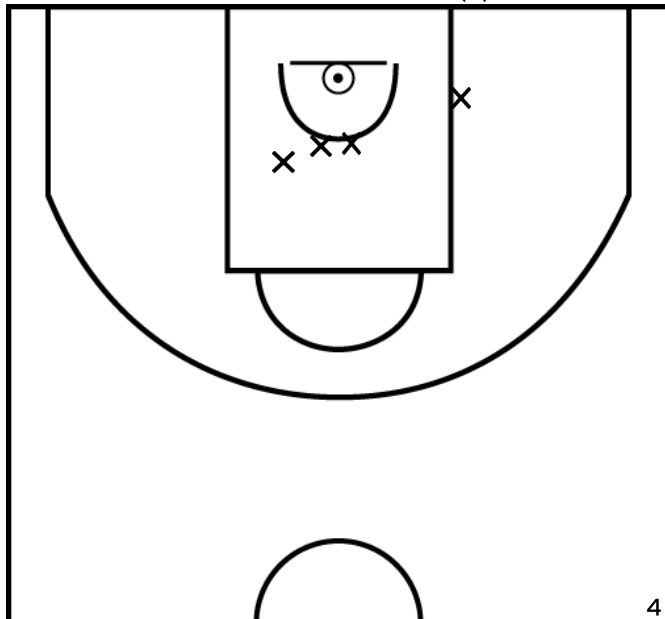
PÉRIODE 2



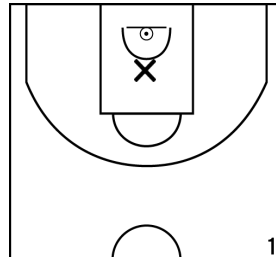
PÉRIODE 4



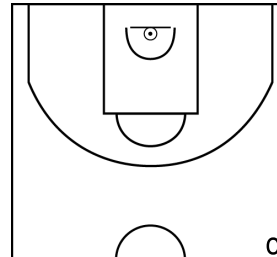
LARDEUX M. - SUD MAYENNE BASKET - 1 (B)



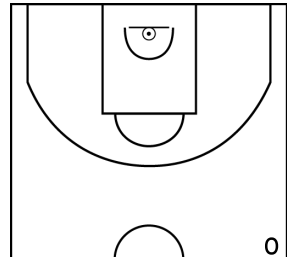
PÉRIODE 1



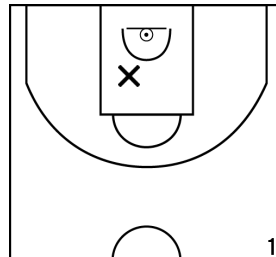
PÉRIODE 3



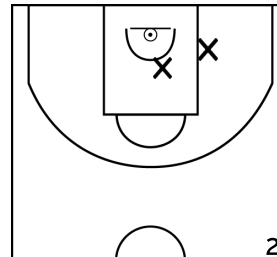
PROLONGATIONS



PÉRIODE 2

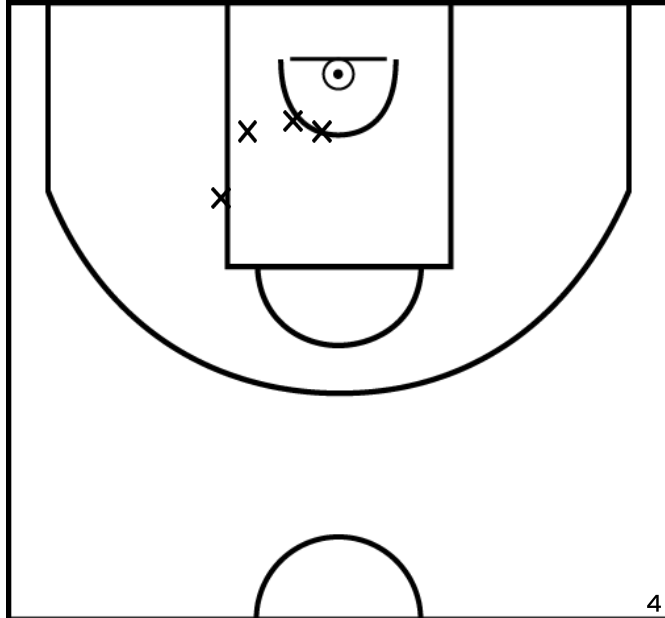


PÉRIODE 4

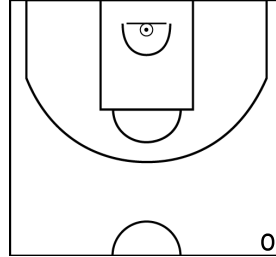


Rencontre: 6051 Date: 08/10/22 Heure: 16:00
Arbitre: MOREAU L HIVELIN H

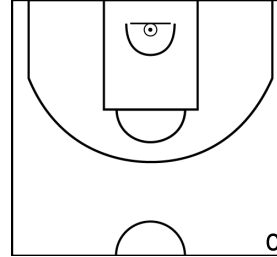
FEVRIER R. - SUD MAYENNE BASKET - 1(B)



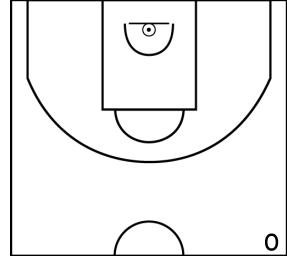
PÉRIODE 1



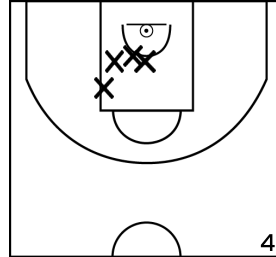
PÉRIODE 3



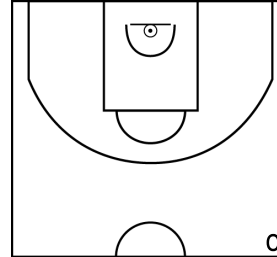
PROLONGATIONS



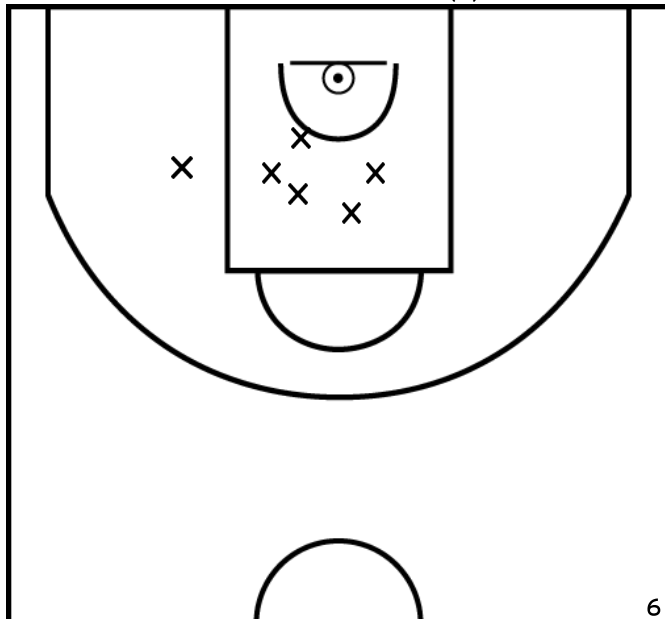
PÉRIODE 2



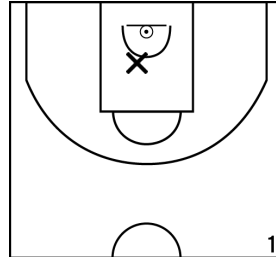
PÉRIODE 4



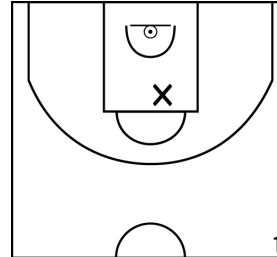
POILANE C. - SUD MAYENNE BASKET - 1(B)



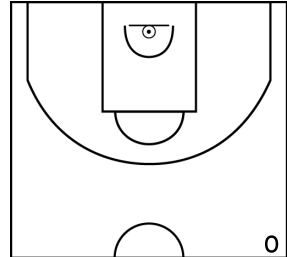
PÉRIODE 1



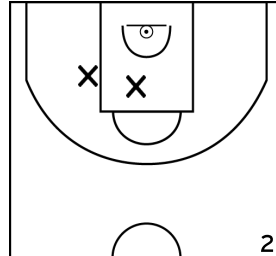
PÉRIODE 3



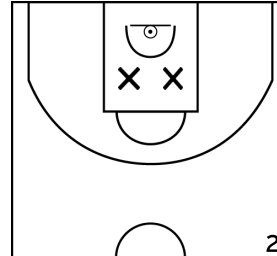
PROLONGATIONS



PÉRIODE 2

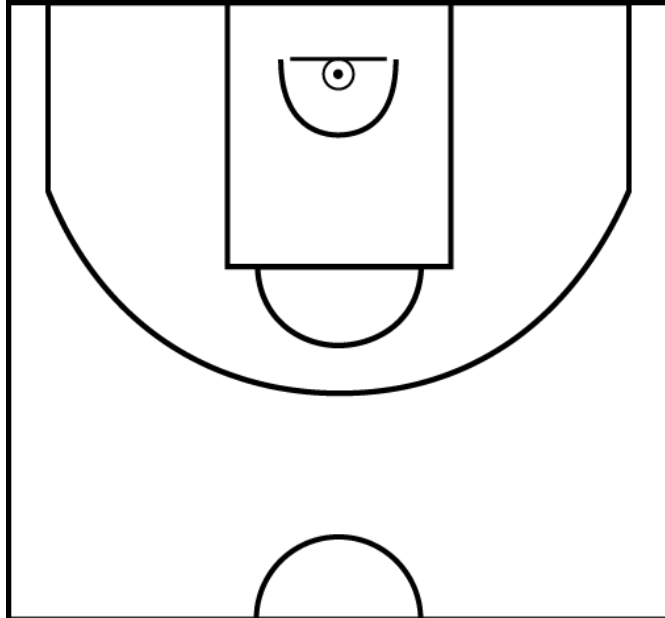


PÉRIODE 4

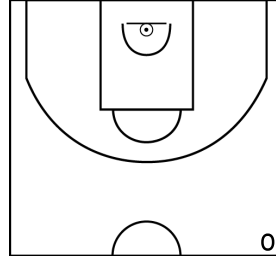


Rencontre: 6051 Date: 08/10/22 Heure: 16:00
Arbitre: MOREAU L HIVELIN H

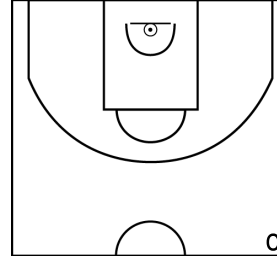
RUVAULT L. - SUD MAYENNE BASKET - 1 (B)



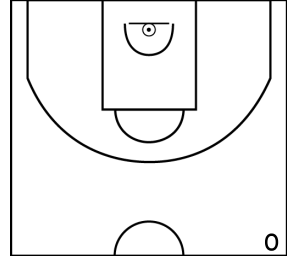
PÉRIODE 1



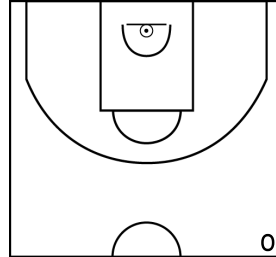
PÉRIODE 3



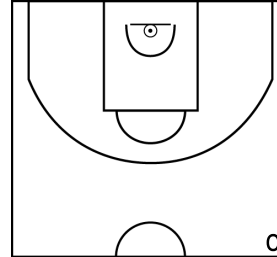
PROLONGATIONS



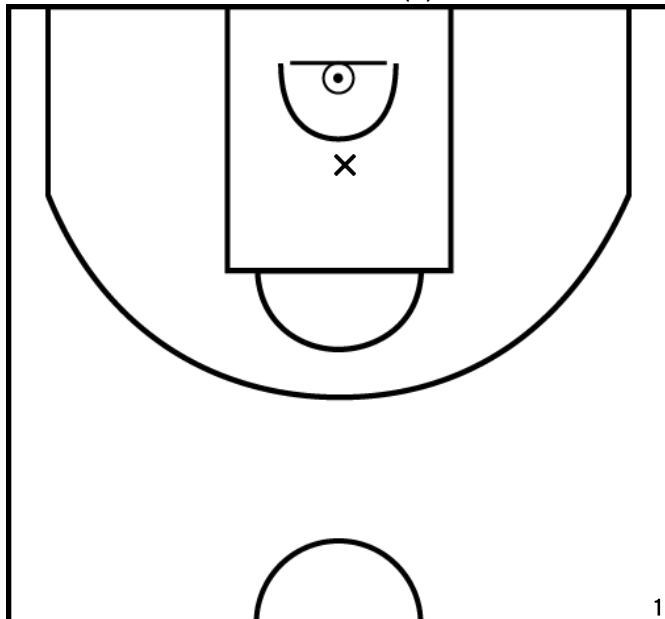
PÉRIODE 2



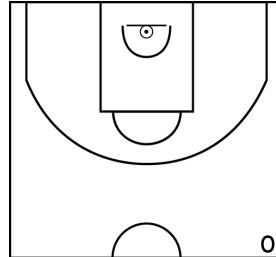
PÉRIODE 4



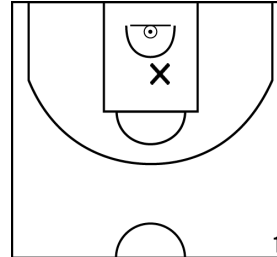
VIOT M. - SUD MAYENNE BASKET - 1 (B)



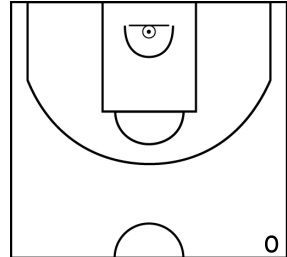
PÉRIODE 1



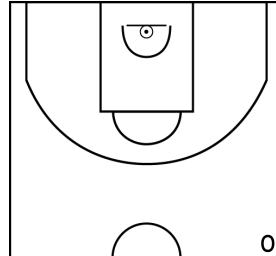
PÉRIODE 3



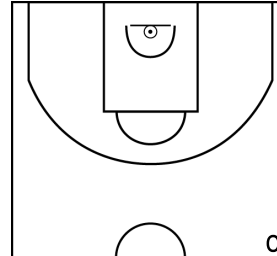
PROLONGATIONS



PÉRIODE 2

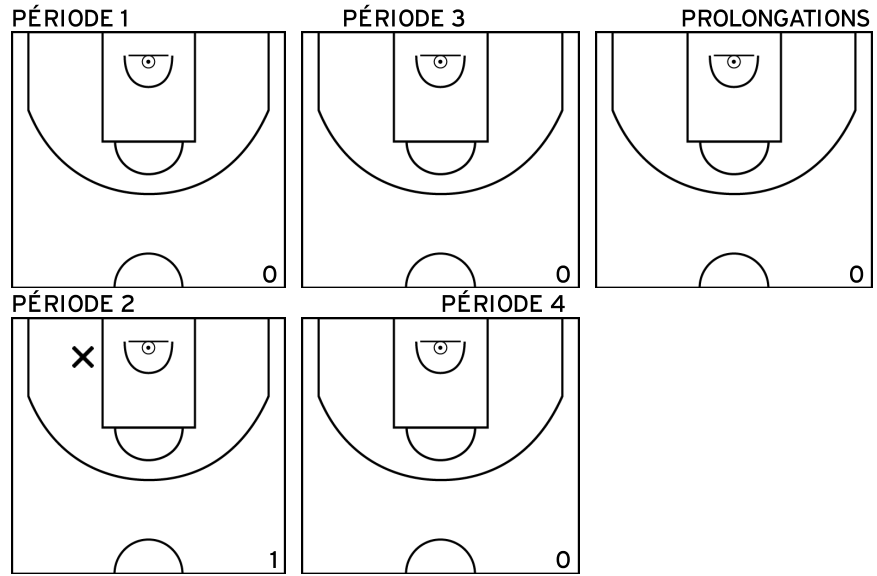
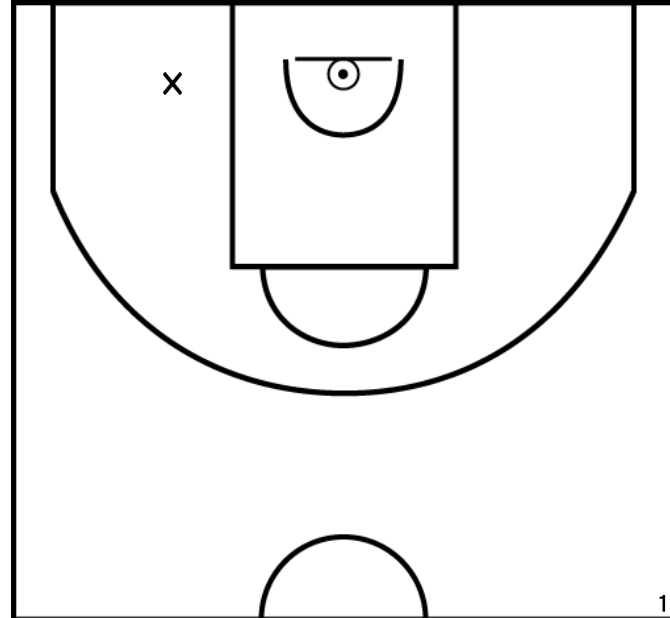


PÉRIODE 4



Rencontre: 6051 Date: 08/10/22 Heure: 16:00
Arbitre: MOREAU L HIVELIN H

DOMAS S. - SUD MAYENNE BASKET - 1 (B)



GREFFIER E. - SUD MAYENNE BASKET - 1 (B)

